

art TRAIL
MANAWATŪ

2024

Oct 12 – 13 • 10 – 4pm



SANTOFT

BULLS

OHAKEA

SANSON

FIELDING

COLYTON

AORANGI

AWAHURI

BUNNYTHORPE

ASHHURST

RONGOTEA

NEWBURY

GLENCROUA

KARANGA

PALMERSTON NORTH

HIMATANGI
BEACH

RANGIOTU

TIAKITAHUNA

LONGBURN

TURITEA

BALLANCE

LINTON

FOXTON
BEACH

FOXTON

TOKOMARU

OPIKI

Manawatu River

Ohakea River

Pohangia River

Manawatu

MANGAMAHU

MANGAWEKA

ŌHINGATI

HUNTERVILLE

VINEGAR HILL

FORDELL

WATUNA WEST

KIMBOLTON

TURAKINA

MARTON

CROFTON

HALCOMBE

CHELTENHAM

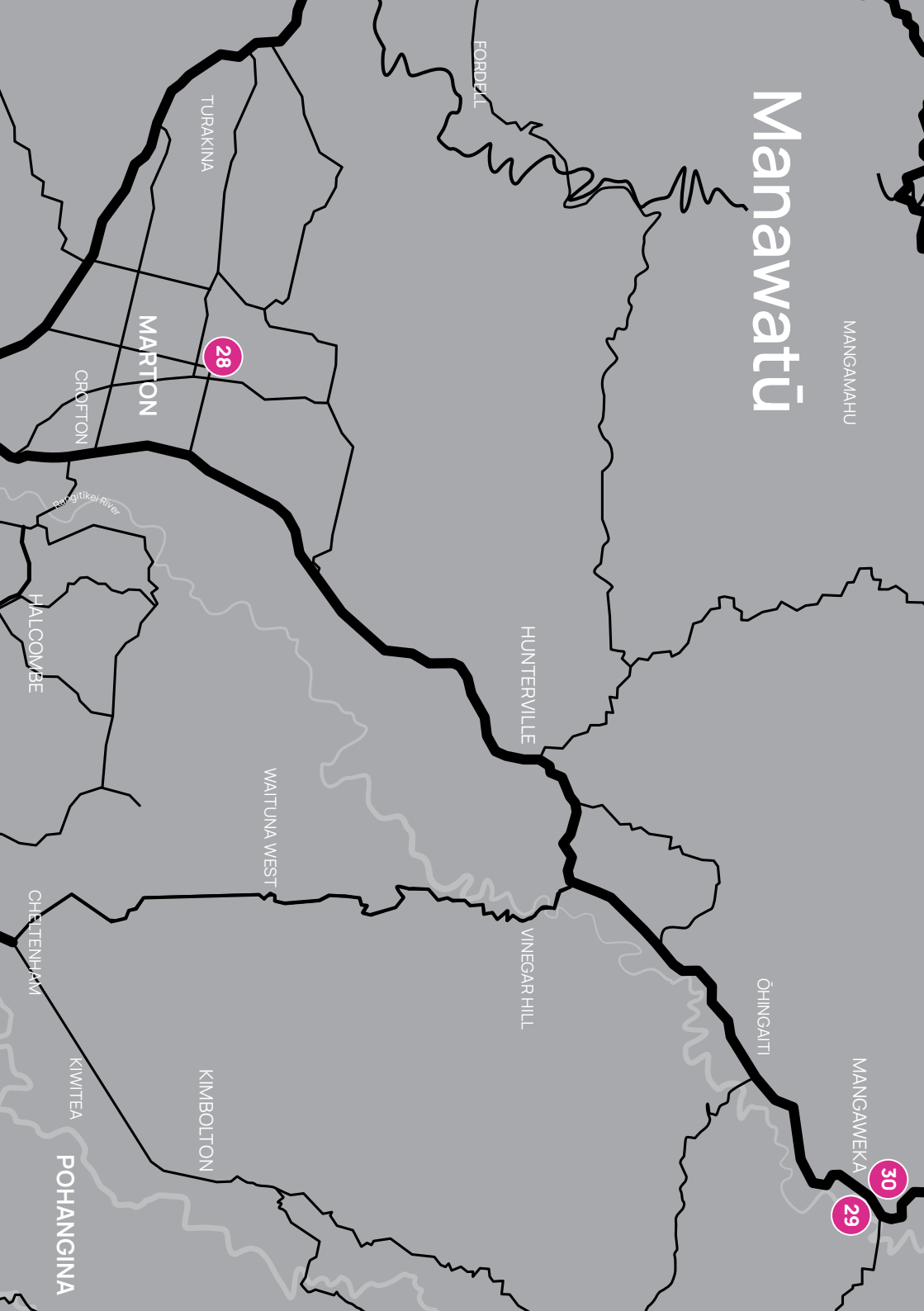
KIWITEA

POHANGINA

28

29

30



Palmerston North





8

15

4

RUAHINE ST

FITZROY ST

FERGUSON ST

RUAHINE ST

ALBERT ST

VICTORIA AVE

PARK RD

TE AWE AWE ST

PAHIATUA ST

ALBERT ST

MANAWATU ST

Art Trail Manawatū









October 12–13

10–4pm

Colours in this guide

-  Palmerston North
-  Ashhurst, Pohangina, Foxton, Himatangi
-  Feilding
-  Bulls, Marton, Mangaweka

Icons in this guide

-  Wheelchair access
-  Toilet
-  Stairs only
-  Location
-  Hub/Studio
-  Workshop
-  Demonstration
-  Interactive

You'll see this Art Trail Manawatū banner outside each location.



Exhibition opening

Trail Mix Showcase

Friday 4th October
5pm

Entertainment and refreshments at Square Edge Arts Centre

 Square Edge Community Arts
 @squareedgecommunityarts
www.communityarts.org.nz

A vertical orange textured background on the left side of the page.

Nau mai, haere mai, welcome to Art Trail Manawatū 2024!

We are excited to offer you this annual regional art experience to enjoy, learn and be inspired.

This free event has been running across our region since 2017 as we stand by our goals to support and promote artists, offering opportunities for them to develop and sustain viable careers in the arts here in the Manawatū.

Explore the mediums of paint and print, pottery and photography, textile, glass and much more as we share the beautiful diversity of art available across our regions.

Straight from the artists' studios and stalls, watch them create and demonstrate or get involved and participate. It is also an opportunity to support the artists directly, if you see something you like you can make a purchase and take home an original work of art.

Thank you to our funding partners Palmerston North City, Manawatū District and Rangitikei District councils for helping to make this event possible, and the wonderful and talented Square Edge Community of artisans and supporters.

Enjoy!

Lorna Johnson

Board Chair • Square Edge Community Arts



Become a Member

Become a square Edge member! Membership is free, cancel at any time.

Members receive our monthly e-newsletter, invitations to event openings, information on exhibitions, workshops and performances and have voting rights at our AGM.

Enter your details on our website main page, or pop in and see us at the Square Edge office.

Exhibit with us 2025

Are you an emerging or established artist, group, or collective with a strong practice and some great ideas for an exhibition?

Square Edge are keen to support a wide range of artists and ensure our visitors have opportunities to see some interesting work.

We would love to hear from artists working in diverse media and Kaupapa including cultural, street art, digital, textile, social justice and more!

To submit an online proposal visit: www.communityarts.org.nz/exhibit-with-us

Proposals for 2025 close on November 30 2024

Venue Hire

Did you know that Square Edge offers five bookable spaces? We have two versatile workshop areas—the Creative Space and the Workshop. Additionally, there's the FX Theatre, equipped with a projector and sound system, the Loft Dance Studio, and the elegant Evelyn Rawlins Room, which also features a piano available for hire.

We also host various workshops, courses and events in these spaces throughout the year.

You can book any of these spaces online at www.communityarts.org.nz under the HIRE A SPACE tab.

Art Trail Tips!

1. **CONNECT** Get together a group and share the driving. Connect with friends while enjoying a special day out.
2. **TIME** Allow at least 20-30 minutes per studio, a couple of hours for each hub space and travel time in between.
3. **ROUTES** Plan which artists and studios you are most keen to visit and how much time your route will take. Break the trail information into two parts and do it over two days, for example Foxton to Palmerston North one day, Feilding and districts to Pohangina the next).
4. **CASH** Expect to find more gorgeous things than you have cash for! Some spaces will have EFTPOS but many will only accept Internet banking or cash. You may wish to withdraw cash in town to take with you.
5. **REFRESHMENTS** **AWHI CAFÉ** is open at Square Edge and onsite at Caccia Birch alongside Ebony Coffee. There are cafes in each district center and at various hubs.
6. **QUESTION** Bring along your questions. Our artists love sharing their process and thinking with visitors, so please don't be afraid to ask!
7. **COMMISSION** If you have a specific work in mind, then chat to our artists about a commission piece. Take artists' contact information away with you or keep this trail guidebook somewhere safe so you can message the artists whose works you love when you need a gift down the track.
8. **EXPERIENCE** Share your experience on social media to help us promote this free event.
9. **SURVEY** Scan the barcode, go to the link, take our survey and be in the draw to win a prize!

We need your feedback!

Art Trail is a funded event that relies on your feedback to continue, scan the QR code or go to the link, share your experience and be in to **win one of three \$300 vouchers** from LIGHTBOX Gallery + Art Supplies

www.surveymonkey.com/r/Manawatuarttrailfeedback



1 Square Edge Arts Center 🏠 📍 47 The Square, Palmerston North

Square Edge Community Arts are a not-for-profit organisation with over 40 years of experience working with and within our community. We house, host, and offer self-representation and the opportunity to build sustainable incomes to our eclectic, vibrant, colourful and hugely diverse community.

Square Edge is the Art Trail Manawātū 2024 starting point. Pick up your trail guidebook here and visit the 'Trail Mix' exhibition, showcasing works from each of the participating artists in one place with works available for purchase. Square Edge will host several artists over the Art Trail weekend, many resident studios and retailers will be open.



📘 Square Edge Community Arts • 📱 @squareedgecommunityarts
www.communityarts.org.nz

1 Emilie Geant 🎨

Emilie's journey from France to New Zealand reflects her profound connection to both cultures. Now settled in New Zealand, she embarks on projects blending her French heritage with her newfound home. During the Trail she will be working on a new painting with ink and watercolor.



emiliegeant.artwork@gmail.com • 022 176 4133 • www.emiliegeant.com
 📱 geant.emilie 📱 @emiliegeant.artwork

1 Gunhild Litwin 🎨

Gunhild Litwin can't leave genres alone. In her practice, she uses soft textiles combined with (vintage) wood, plastics or metal, bringing to life objects and creatures not quite of this world.

She will be providing a drop-in workshop where participants can create a personal memento either in the form of a pin or brooch, or as a small sculpture. Participants are encouraged to bring small items of significance that could be used in an assemblage. Tools, additional items and adhesives will be provided for a modest koha (donation).



gunhildlitwin@gmail.com • 022 975 393 • www.gunhildlitwincreative.com

Gill Allen (BFA Cert FET)

Gill believes there is magic in a mark that can convey a treasure box of stories. Drawing on this idea, Gill works with soft pastels to produce colourful, contemporary, and semi-abstract landscapes and flower illustrations. During the trail she will be demonstrating her soft pastel process from underpainting to completed landscape, showing how she uses mark-making to emulate the movement and life in nature.



1

gillsartspot@gmail.com • 021 155 5340 • www.gillsartspot.co.nz • @gillsartspot

Gill Allen NZ Artist • GillsArtSpot - Gill Allen NZ Artist

Moodymiss

Sarah Moody draws inspiration predominantly from the animal kingdom and natural world that shaped her upbringing. With a background in animation, she captures character and expression with a touch of illustrative flare. Sarah specializes in animal portraiture and explores the absurd using needlecraft, digital, and print media.



1

moodymissmail@gmail.com • www.moodymiss.com • @moodymiss

Rachel Stockley

Rachel is a print maker at heart and is a dedicated member of Print Council Aotearoa New Zealand. While she primarily focuses on this medium, she loves exploring a diverse array of artistic mediums to produce a variety of works.



1

themagpiehandbag@hotmail.com

@themagpieshandbag

Susan Jestin

Bringing unique stories to life through art, Susan enjoys transforming unique stones into functional art pieces such as door stops, bookends, and indoor/outdoor ornaments. Beyond working with stone, her creative repertoire also includes vibrant acrylic paintings on canvas and paper.



1

jestintime@xtra.co.nz • 021 160 5642 • @jestintime61

1 Te Whatu Raranga o Highbury Weavers Inc.

An incorporated, non-profit community group with an interest in the art of weaving using traditional Māori weaving skills. The Highbury Weavers work together to uphold the mana and tikanga of traditional Māori weaving within a contemporary context using both harakeke and contemporary materials.



 Te Kokonga Pouri Whatu Raranga Roopu Papaeoia

1 The Pottery

The pottery is a functional and welcoming studio that hosts team-building workshops, staff social events, school holiday programs, youth groups, and regular pottery classes, fostering a sense of inspiration and motivation. Visit the space, chat with members while they work. There will be works on display and for sale.



 **The Courtyard**
reception@ca.org.nz

1 Vonnie Sterritt

Vonnie has a Fine Arts Degree from Canterbury University and is a Postgraduate of Massey University. She has worked as an illustrator for Universities and book publishers. Vonnie's paintings celebrate the colour and light aspects of what are unique New Zealand landscape compositions, particularly the Manawatū.



 **Studio 103**
Vonniersterritt@gmail.com • Artsterritt.co.nz

1 Robyn Laing (BVA)

Robyn describes herself as a "figurative painter", always striving to portray her work classically using oil as the main medium and painting on a linen or canvas support. She is very influenced by classical Dutch flower painting and by the elusive challenge of portraiture. Robyn has been painting at her Square Edge studio for the last 7 years.



 **Studio 104**
Robynlaing@gmail.com • 021 267 8328

'Ata-Mai Pasifika Collective

Pasifika artists-in-residence; Epenesa Tavita Faaiuasao, Tiana Fauolo, Jodie Haitana-Sturm, Malutamalii Tise Fauolo, Soosemea Aiiloilo, and Ana Tuimana, will be at Square Edge from mid-July to mid-October. Each artist will design and create two wearable art garments inspired by the Pacific and Aotearoa. These unique creations will be showcased at the end of their residency in a wearable arts fashion show.

📍 Studio 105



1

Ripeka Paapu

Ripeka Paapu (BVA) is a multidisciplinary artist with a heavy focus on Te Ao Māori and social issues that we face. Over the weekend you can join her in making and learning about Māori Art. Activities will include raranga and poi making.

📍 Studio 114



1

Ken Thomas

As an artist working primarily with oil paint, Ken's focus is on exploring humanity's relationship with the natural world through the lens of airplanes and birds. His art seeks to raise awareness and spark conversations about environmental concerns, and the impact of our actions on the world around us.

📍 Studio 205
027 229 7205



1

The Arts Nest

The Arts Nest are a collective of three artists who make work around themes of nature, community and healing. Cheleigh Dunkerton, Helen Lehndorf and Marolyn Krasner work with paint, mixed media, cyanotype and upcycled materials. Visit the Nest and see their work!

📍 Studio 203

Cheleighdunkerton@gmail.com • [f artbycheleigh](#) • [@cheleigh_anne](#)
[@unschoolartschool](#) • [@marolynkrasner](#)



1

1 Art of Framing – Keith Stewart Internationally Qualified Picture Framer

Keith Stewart is an internationally qualified picture framer specialising in Preservation framing. He offers an interactive consulting and designing process. Over the month Keith will be holding workshops on mounting techniques for various media artworks.



📍 Studio 115

Keith@artofframing.co.nz • 027 447 5927 • www.artofframing.co.nz • [f](#) Art of Framing
@Artofframing1

2 LIGHTBOX Gallery + Art Supplies



📍 Square Edge

LIGHTBOX Gallery + Art Supplies is a beautiful, light-filled space filled with local artistic stories and treasures. Stocking a variety of art supplies and a beautiful selection of local art, they are here to help you be inspired & thrive creatively!

lightboxgallerynz@gmail.com • [@lightboxnz](#)
[f](#) Lightbox Gallery & Art Supplies
www.lightboxnz.com



2 Michele Theobald

Michele is consistently amazed at how a splash of colour, or a unique shape can convey so much emotion and energy. Drawing inspiration from everyday life and experiences, she works with acrylics which give her the freedom to explore vibrant colours and abstract forms.

contact@micheletheobald.co.nz
www.micheletheobald.co.nz • [@MicheleTheobaldArtist](#)



3 Studio on the Square



📍 All Saints Church driveway
next to Square Edge

Studio on the Square promotes creativity and artistic talent, offering art classes and workshops for children and adults of all ages. Classes and workshops are self-paced and structured to suit each person's progress. The studio also hosts a Creative Space where artists have 24/7 access to work on their projects.



Caccia Birch House



📍 130 Te Awe Awe Street

4

A Category 1 Historic Places Trust listing, Caccia Birch house is set in three acres of gardens with protected trees and views over the Hokowhitu lagoon.

Several artists will be housed in this beautiful venue in both the main house and coach house. Enjoy coffee from Ebony Coffee and food from AWHI café on the ground floor, spend time enjoying a wide range of works and a chance to meet the makers.

Alissa Jane Dyer

Alissa is a passionate conservationist and draws inspiration from New Zealand's unique native flora and fauna. Her painting subjects include backyard, bush and marine species, and express a sense of playfulness in her loose, splashy wildlife watercolor paintings.

alissajanedyer@gmail.com • www.AlissaJane.com
[@forever.fidgety.art](https://forever.fidgety.art)



4

Belinda Paton

Belinda is an award-winning full-time artist who has spent a lifetime developing her own unique and whimsical style. Her mediums include clay, paint, jewellery, glass, and sculpture to create her beautiful pieces. Belinda also hosts workshops and "Misty Mountain Retreats" these include classes in ceramics, painting, jewellery and sculpture, teaching you how to connect with your own inner artist to bring your creative essence to life.

opalskydancer@yahoo.co.nz • 022 072 5517



4

Bhavisha Shah

The theme of Bhavisha's art is metaphysics, and he endeavors to transcend the boundaries of space and time by exploring the dynamic interaction of colours.

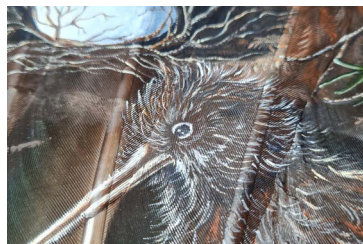
bhavishagshah@gmail.com



4

4 Beth McGill

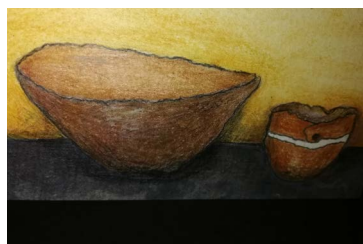
Beth's painted feathers encapsulate her love of New Zealand's landscape and bird life, each piece is unique and her art ever evolving as she paints with acrylics on this delicate natural canvas. Her work is very detailed, yet fluid within the confines of each individual feather.



Bethtearohaart@gmail.com • 021 233 4262
www.bethtearohafeathers.co.nz •  Beth McGill Artist Feathers • @Beth McGill Artist Feathers

4 Brenda Banks

Brenda has a BFA majoring in glass and painting and has studied at the Wanganui Glass School exploring blown forms, texture, pattern, and colour. The conceptual framework throughout her art studies has been based on 'personal journeys', volcanic landscapes and activity and the exploration of a variety of themes using different mediums.




brenda_glassartist@live.com • 027 489 1771

4 Burnt Offerings

Ngaire is an artist who specialises in upcycling second hand finds by etching mirror and stone and burning onto wood to create one-off unique pieces of art. Over the Arts Trail weekend Ngaire will be 'live burning' come along and watch this fascinating process.



burntofferings2013@xtra.co.nz • 027 829 8356
www.burntofferings.co.nz •  Burntofferings NZ • @burntofferingsnz

4 Darren Wallace Art

Darren Wallace brings his subjects to life with his detailed and realistic art, capturing people, pets, wildlife, and the vibrant landscapes of New Zealand in their natural settings. Darren will be showcasing his series "Reflections".

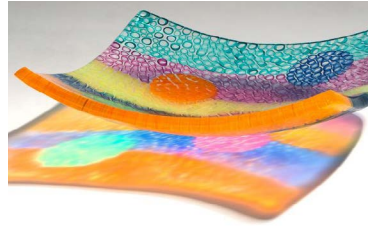


darrenwallaceart@gmail.com
www.darrenwallace.art • @darrenwallaceart

David Traub

David has worked with glass for 50 years. Having started his glass journey in Texas he moved to New Zealand in 1995 to lead the glass programs at the polytechnic in Whanganui. He retired from teaching in 2006 to spend more time making art. His work is in numerous collections and public galleries and is featured in dealer galleries as well as his studio in Whanganui.

david.traub5@gmail.com • 021 113 7970 • www.glass-newzealand.co.nz



4

Dinky Design Co

What began as delicate designs on nails has blossomed into a passion for crafting stunning folk art. Utilising the single brush stroke technique, Dinky Design Co invites you to explore the captivating world of her unique and enchanting creations.

027 5269 684 • @dinkydesign.co • [f](#) Dinky Design Co



4

Double Trouble

Double Trouble are Marion Grinstead and Rosalind Fitz Patrick, they have been working together for seven years. Rosalind loves geometric work while Marion likes creating pictures. Some of their pieces are functional, some are wall art or on a stand to be displayed. They also have a range of jewellery. Double Trouble's own studios are open by appointment.

mvbiggles@hotmail.com • 027 221 9776 • [f](#) Creativeglassjewellery
@Rosalind_Fitz_Patric



4

Franco Jose

Franco Jose began his artistic journey as a printmaker before expanding into painting. Franco is a dedicated advocate of deconstructionism, viewing it as an opportunity for individuals to reexamine, redo, and ultimately improve.

francojose.nz@gmail.com



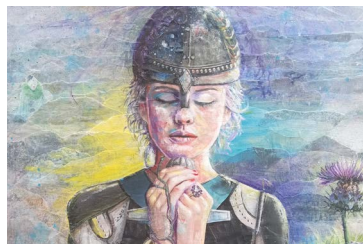
4

4

Gina Hamilton

Gina grew up in Wainuiomata Wellington and started painting and drawing at the age of 10. Self-taught after high school, she explores a range of mediums and styles specialising in Collage art. Gina will be working on an art piece over the duration of the Trail.

022 279 8633 • gwhizzorganise@gmail.com



4

Jo Melville

As a mural artist painting flowers and animals is Jo's passion. She loves to explore different mediums including watercolor, acrylic, and inks creating colourful works of art. She is inspired by what she sees around her, from a vase of flowers to her animals. During the trail Jo will have greeting cards and T- shirts available.

jo.melville.art@gmail.com • 021 883 568 • [@Jo_melville_art](https://www.instagram.com/Jo_melville_art)



4

Lisa Taylor

Lisa works predominantly with acrylics, but includes a variety of other media, and experiments with more unusual substances, to achieve a different level of feel and depth. While Lisa's style is varied, landscapes and abstract paintings cover most of her work as she takes inspiration from nature, form and texture. Lisa has won awards and taken part in many exhibits throughout New Zealand

inquiries@lisataylor.co.nz • 027 696 4538 • [f Lisa Taylor Design LTD](https://www.facebook.com/Lisa-Taylor-Design-LTD) • [@lisa__taylor](https://www.instagram.com/lisa__taylor)



4

Lois Price

Lois' inspiration comes from the magnificent scenery that is our country New Zealand. Working with oils, she creates semi-stylized landscapes that concentrate on shape and form rather than detail. She also uses strong lines defined by light and shade to encourage a contemporary look.

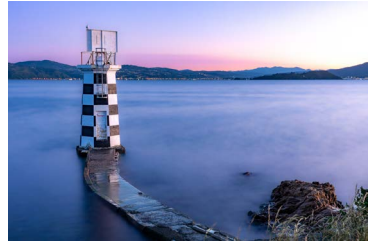
loismp48@gmail.com • 020 401 36646



Manawatū Camera Club

Since May 1947 the Manawatū Camera Club have enthusiastically shared the passion of making photographic images and sharing their work. The Club's aim is to promote the enjoyment of photography for individuals and the community.

manawatucameraclubnz@gmail.com
www.manawatucamera.net.nz



4

Marcus Ingley

As a glass blower, Marcus is drawn to the traditional Swedish style of glass making characterized by its clean lines, balanced forms, and subtle details that elevate its functionality to an art form. As a glass caster, he is inspired by the precise beauty of geometric shapes. His work is characterized using sharp angles, straight lines, and precise curves that come together to create unique and mesmerising forms.

marcus.ingley@gmail.com • www.marcusingleyglass.com



4

Michael Angelo O

Carving is part of Michael Angelo's Ngāti Wharekōkōwai, Ngāti Kahungunu and Tūhoe whakapapa. His carving style is unique, unplanned, and comes from his soul, guided by the spiritual aspects of nature. Michael holds a Diploma in art and creativity with honour.

027 672 6435



4

MS Central Districts Art Group

The MS Art Group are artists who live with the challenges of multiple sclerosis (MS) and share a passion for creating art. MS is a chronic autoimmune disease that affects the central nervous system. Despite these challenges the art group find solace in their creative pursuits and gather together weekly to support each other, learn from one another, and showcase their artwork that includes painting, drawing and collage.

ryansutherland@xtra.co.nz



4

4 **Mulberry Floral Art Gallery** **Virginia Long Photography**

An experimental studio creating photographic fine art prints as well as floral work using dried plant material. Inspired by the Dutch artists, Virginia creates traditional still life images from her own designs. The use of game is brought to life in vintage style hunting imagery of a decidedly masculine nature. Recent works explore experimentation with acrylic paints in a vibrant abstract style.



vlong@inspire.net.nz • 0275 783660 • www.mulberryfloralartgallery.co.nz

4 **Romuald Rudzki**

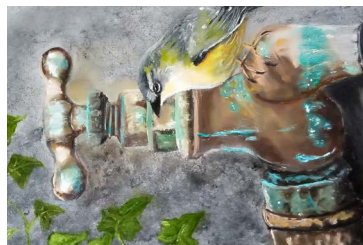
Romuald, a practicing artist member of the New Zealand Academy of Fine Arts, is the founder of Prealism, which liberates the artist from their own ego through a process of kenosis (emptying of the will). Paintings are created through the interplay of water, ink and paint and result in images which cannot be created in any other way. Visitors will be able to add to a Prealist painting in a Prealist way.



rom@export.ac.nz • 021 783 954 • [f Prealism](#)

4 **Sue Taylor**

Sue first started working with oil paints about 15 years ago. She finds it both relaxing and challenging, and draws inspiration from nature, colour, objects and people. During the trail Sue will be painting an original piece of art.



moanddotaylor@gmail.com • 027 7171918
[f SueTartwork](#)

4 **Tim McAninch**

Tim aims at turning dreams into realities with a process of discovery, contemplation, transformation, and seeing relationships. He draws upon personal experiences and perspectives. Tim earned a Bachelor of Fine Arts from the University of Northern Iowa in 1987.



timmcaninch@hotmail.com
www.artwanted.com/mcaninch/gallery/ • www.sito.org/cgi-bin/egads/segads?idonly=MCT

Victoria McGovern

Victoria believes that art is a universal language that she can use to tell her stories, sharing the beauty of the world around us. She works in oils and acrylics building up layers to create visual depth. Her inspiration comes from constantly observing nature, wildlife, pets, birds, and fish. Over the weekend Victoria will be painting multiple art works in different stages of creation.



4



keith.mcgovern@xtra.co.nz • 027 604 1113 • www.victoriarmacgovernart.co.nz

Walter Wisler

Walter Wisler is an artist with a background in graphic design. He is working predominantly with acrylics enjoying the finer details and creating quirky pieces.



4

walter@printcraft.co.nz • @wwisler

Creative Sounds Presents...

SWAMPFEST

2/4 Music Festival

10th - 20th OCTOBER

The Stomach
84 Lombard Street, PN

All Local
All Loud
All Ages

for more information: f

The Stomach is an all ages, drug and alcohol free music venue funded by PNCC

Palmerston North Studios

5

3d Glass Art

Serena Mercer is a self-taught artist and tutor working with fused glass for 15 years. Her pieces are one-off, made with love, sweat and tears. Serena loves experimenting with different techniques and colour. She teaches classes and sells artwork from her home studio.



📍 21 Ridgeview Rd Aokautere

30glassart@gmail.com • 027 406 8156 • 📱 3d Glass art

6

Red Crocodile – Dr. Laurence Gatehouse

Dr. Laurence Gatehouse hand weaves rugs using traditional techniques and mostly natural materials. He draws inspiration from nature, filtered through his biological training, high energy physics and mathematics. During the Trail he will have a loom set up and will be demonstrating weaving techniques.



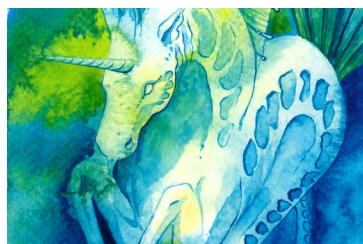
📍 6 Kent Crescent

redcrocodile.nz@gmail.com • www.redcrocodile-nz.com • 📱 Red.Crocodile.NZ

6

Jenny Gatehouse

Jenny's studies in the arts, sciences, cultures, history, languages, and animation provide her with a rich palette to draw inspiration from. Through her drawings and paintings, she brings to life tales, mysteries, myths, and dreams.



GatehouseJS@gmail.com

www.jennygatehouse67.artstation.com

7

George Street Collective

George St Collective is a local artisan gift shop with a focus on supporting over 30 Manawātū based creatives and artists by retailing the best of their creations. Stocking a beautiful range of original art, prints, jewellery, ceramics, toys and craft.



📍 44a George Street

georgestreetcollective@gmail.com

@georgestcollective

Gallery Melange

Discover a captivating display of mixed media art that embodies the gallery's ethos of refresh, repurpose, reimagine. Explore the diverse works crafted from glass, wood, stones, shells, vintage jewellery and clay; presented in both 2-D and 3-D forms. Over the Trail weekend join them to create your own artwork with pebbles, shells and sea glass.



8

7 Belfast Place

thegallerymelange@gmail.com • 022 345 6200 • www.gallerymelange.co.nz

Gallery Melange



Greenhaugh Gardens & Nursery

914 Napier Road

Greenhaugh Gardens hosts Margie Coplestone and a collaboration of fellow artists Dean Giddens, Jim Jeffries, Ann Bootle, Debz Dickinson, Jonny Moos, Lynne Atkins and Barry Will.

Margie Coplestone

Margie works in a range of genre, but her preferences are portraiture, intentional camera movement (ICM) and florals.

margie627443@gmail.com • 021 249 4432

Gumboots and tiaras •

@Gumboots and tiaras



9

TWHH – Holistic Hauora, Regena Te Whaiti

Regena Te Whaiti is an ACC registered Māori Rongoā Consultant and an Independent Māori Kaituhono/ Connector for Tangata Whaikaha - Disabilities. Rongoā Māori is the traditional Māori healing system. This ancient lore includes plant use, massage, and incantations. Regena provides a Rongoa Certificate of Appreciation, a 12 week course learning about Rongoa Māori.



10

Te Koru Kohatu Whare 316 Featherston Street, Palmerston North

regenatewhaiti9@gmail.com • 027 530 0111

11 HOW² Te Ako Charitable Trust



📍 1 King Street

How² Te Ako Charitable Trust supports former refugees, immigrants, migrant and minority groups within Palmerston North. During the year they have run a series of art workshops, creating work around the theme "The World I Want To Live in" which they will be showcasing during the Art Trail.

art@how.kiwi • www.how.kiwi/art



12 Mabel Vickers

A cute little store offering a range of lovely goods and gift boxes plus a pottery studio with workshops for those who want to learn, create and connect.

📍 271 College Street



hello@mabelvickers.co.nz • 021 705 522

www.mabelvickers.co.nz • @mabel.vickers.store



13 Snail Artist Run Space



📍 103 Taonui Street

Snails is an artist run collective providing a community space for artists and musicians. Holding gigs, workshops, openings, readings, art installations, performances, art exhibitions as well as providing private studio spaces that support a range of creative enterprises including visual, print and sound media along with several mixed media disciplines.

snailspalmy@gmail.com • f snailsartistrunspace



14 Splatter – Rachel Robb



Splatter is an inclusive ceramic painting studio, offering pottery and mixed media art workshops for all ages and abilities. Splatter's Creative Director Rachel Robb is a florist by trade and will be exhibiting everlasting floral pottery creations.

📍 92 Princess Street



Rachelghayward@gmail.com • 020 4041 6909

@splatter_nz • @The_pottery_florist • @Rachel_robb_artist • f Splatter



Swamp Gallery

The Swamp Gallery was established to unite artists throughout the region, providing them with a venue to exhibit and sell their work, with all profits going directly back to the artists. During the Art Trail they will have an exhibition, featuring pieces from their collection of established and emerging artists.

📍 102 Fitzroy Street

022 405 4411 (Gareth Warnock) • @theswampgallery



15

SWIFTMANTIS

Mikal Carter is a well-recognized realism artist from Palmerston North most known for his large scale hyper realistic murals, street art, illustration, and design and as Mantis Mike Tattoo for his unique, realistic tattoo designs.

📍 The Grand 339 Church Street,
Level 2 – West Wing

SWIFTMANTIS@gmail.com • SwiftMantis.com
@SwiftMantis • Facebook SwiftMantisMurals



16

UCOL Manawatū – Creative Industries

UCOL Manawatū Creative staff and students are exhibiting still and moving images across a wide range of different media; design, illustration, video, 3D-animation, and photography. Workshops, print sales, & building tours are also available.

Workshop 1: Saturday 1.00-2.00pm: Creation of a collective mural with each person creating a 3x3 art piece through drawing, painting, or vinyl design.

Workshop 2: Sunday 1.00 -2.00 pm: Smartphone photography 101 – A speed workshop taking you through lens/light, posing, and editing.

Call 0800 GOUCOL to register. Limited spaces available

enquiry@ucol.ac.nz • 0800 GO UCOL (0800 468 265) or 021 820337 • www.ucol.ac.nz
Facebook UCOLNZ • @UCOLNZ • Tiktok @ucolnz



📍 89 Queen Street



17



Ashurst & Pohangina

18 County Fayre Community Art Gallery



📍 976 Finnis Road, Pohangina

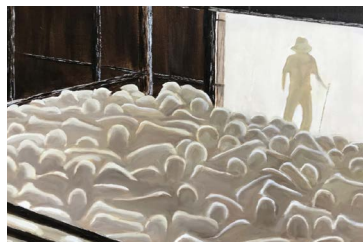
The Gallery at County Fayre supports artists from the Pohangina Valley and near-by areas. The gallery has a vision to bring people together and celebrate their work, every year is different. As well as art, the Gallery County Fayre offers; classic Devonshire teas, local artisan products, crafts and historic photos of the valley.



countyfayre@inspire.net.nz • [Facebook CountyFayre](#)

19 Graham Christensen

Graham's paintings depict his life-long love of farming and the unique landscape that New Zealand offers. He paints in a large light-filled studio, a converted room at the back of a barn. He regularly exhibits at various galleries throughout the Manawatū/Rangitikei region and has sold his work throughout New Zealand and internationally. Graham will be working in his studio over the weekend.



📍 84 Glenburn Road, Ashhurst



paintergnc@gmail.com • 021 238 6784 • www.grahamchristensen.co.nz



Keeping your appetite satisfied, AWHI Café will be open throughout the Art Trail at Square Edge and onsite at Caccia Birch.

Himatangi & Foxton

Himatangi Beach Community Centre



📍 4 Koputara Road (by surf club)

20

Art Trail Manawatū comes to Himatangi Beach for the second year. With its iconic mosaic fishing buoy in the central hub what better place to celebrate local beach artists than at the adjacent Himatangi Beach Community Hall. Nature has always served as an inspiration to artists, and from the sounds of the sea to the piles of driftwood, this wild west coast beach is a constant source of bounty for our local creators.

Below are the artists who will be at the Hall during the Art Trail. Colin Wallace and Margaret Hodder will also be there.

Alison Scott

Alison is an artist working primarily with watercolour aiming to capture the energy and essence of the moment. The inspiration for her art comes from the environments she has lived in or visited, gardens and bird life. She has a connection with the coast and rivers that inspire her work.



20

Foxton Town & Country Spinners & Weavers

A group of spinners and weavers who meet every Tuesday and Wednesday and the first Saturday of the month. They meet for spinning, knitting, weaving, felting, dyeing and for the good general company of one another. During the Art Trail they will be demonstrating spinning and weaving techniques.



20

gaesjtyler@yahoo.co.nz • 027 203 6828

Foxton Town and Country Spinners and Weavers

Gwendoline Dawson

Gwen spent the first 40 years of her life in the Northeast of Scotland and the last 25 years in her adopted home of New Zealand. Gwen has experienced many sights and had many adventures. These are seen through her lens, her eyes, her imagination of travel and time.



20

20 Munro Felts – Lauretta Wallace

Lauretta works with NZ wool roving (the wool used for spinning) and a fine needle with tiny barbs, merging fibres to create colourful 3D sculptures. She loves the opportunity to create, recreate and keep evolving her imagination and craft skills. Over the Art Trail weekend Lauretta will demonstrate the making of a sculpture.

021 153 7562 • [f munrofeltsnz](#)



20 Sue Blithe

Living locally at Himatangi beach, Sue works with leadlight glass, ceramics, macrame and treasures from the beach. Sue will be working and demonstrating the craft in her studio over the weekend.

suejim@xtra.co.nz • 027 565 1305



21 Artitude

Artitude are a group of local artists from Foxton and the surrounding district who meet weekly on a Tuesday from 10am – 3pm in the public space at Te Awahou Nieuwe Stroom. The group produce works in oils, acrylics, pastels, pencils, inks, scratch board and modelling media. During the Art Trail, Jude Batten and Jill Hammond will be demonstrating their art on site.

Weekend hours 10am–3pm

Judebatten@gmail.com • 027 486 7105 • [f Artitude](#) • [f Jude Batten Art](#)
www.judesart.com • [f jillsartfoxtonbeach](#)



📍 Te Awahou Nieuwe Stroom
92 Main St, Foxton



22 Dickens Studio

Lynda's passion is painting, she studied Art at Nelson College and has exhibited at Square Edge, Hawkes Bay Arts Center and Art Shows in Auckland and Feilding. Lynda's commission works include racehorses. Over the weekend she will be working on recent oil paintings on canvas.

📍 13 Beach St. Tangimona

lindadickens@xtra.co.nz • 027 738 0642



Feilding

The Feilding Art Centre



104 Manchester Street

23

The Feilding Art Centre provides a hub for Manawātū artists to share and grow their practice and nurture connections within the arts community. Exhibiting in the main gallery will be the 2024 Art Awards, a juried exhibition of works by emerging and established artists from all over New Zealand. Upstairs will host several artists exhibiting and working on their art. Don't forget to visit the gallery shop, with a selection of artworks and handmade treasures!



Manager@feildingartsociety.com • 06 323 2323 • www.feildingartsociety.com

Feildingart • @feildingart

Cheryl O'Brien

Cheryl has always been drawn to art, doodling away when she should've been studying. She recently took up teaching art to sustain her basic needs while she taught herself how to paint, now she has turned her passion into a business and does what she loves every day. Cheryl has a deep love of portraiture and a keen desire to explore the world of surrealism.



23

cherylobrienart@gmail.com

Eris Newson

Fine artist, photographer and teacher, Eris produces work incorporating natural and rural themes. She is inspired by and enjoys capturing the landscapes of her environment. Eris uses oil painting as her main fine art medium. Eris produces limited edition prints of selected works, creates stunning portraiture and landscape paintings, and is available by commission.



23

eris@eris.co.nz • 027 299 2482 www.eris.co.nz • artisteris • @erisnewson

23 Judy Johnstone

Judy has been actively involved in the Feilding art scene for over 50 years. Judy has been awarded many accolades for her paintings over the years. She continues to enter exhibitions throughout New Zealand to make sure the quality of her work is keeping up to the high standards she aspires to. Judy's paintings are in local, national and international private collections.

judy.j@xtra.co.nz



23 Mary Lewis

Mary has a real interest in environmental issues and photographs fauna and foliage on several local walks. She is especially fascinated by fungi and has many wonderful colourful photos of them in "Te Āpiti Manawatū Gorge" by Michele Frey. Photography is her passion and takes her to amazing places, where she feels blessed to be able to find the wonderful images that fill her camera's lenses.

marytloo@yahoo.co.nz



23 Robyn Parkinson

Robyn is a multidisciplinary artist working in various mediums including painting, sculpture, framework and silver jewellery and wooden spoon carving. Robyn is an active member of the Feilding and Districts Art Society and enjoys the opportunity to exhibit pieces regularly. Over the weekend Robyn will be working on a steampunk creation.

027 368 7376 • [@robyn.of.wood](https://www.instagram.com/robyn.of.wood)



23 Tineke McLean

Tineke's artistic journey began nearly 35 years ago. Her background in graphic design, textiles, and pottery decorating has enriched her work from the start and continues to benefit her today as a painter.

tinekemclean@gmail.com • 027 213 3116

[f Tineke Mclean's Art Page](#)



Feilding Girls

Gael Gamble, Melissa Haywood, Corinne Andrews, Irene Whittaker

Feilding girls are a talented and experienced group of artists. Their works ranges from traditional, to abstract, cartoons to scenery and portraits. Experience the artistic worlds of Gael, Melissa, Corinne and Irene.

027 375 6342 or 03 230 667

📍 67 Sandon Rd Feilding

24



Kylie Wardlaw

Inspired by nature Kylie Wardlaw conveys a powerful meaning about her subject through a spontaneous, free and painterly approach as she works instinctively, exploring abstract compositions. She likes to convey a sense of being moved by the drama of the environment and enjoys rural and seascape views for their sense of expansiveness and ever-changing climatic conditions.

📍 4 Collins Crescent, Feilding



kylie.wardlaw@inspire.net.nz • 021 774 192 • 📱 Kylie Wardlaw • @kyliewardlaw

25



Foibles & Mania Gallery



📍 248 Halcombe Rd Feilding

26

Foibles and Mania is an Art Trail Manawatū pop up gallery providing space for established and emerging local creatives to support each other in sharing their art with you. Other exhibiting artists include Carly Thomas, Maree Brannigan, Jeanette Henderson, Elizabeth McKoy and Sue James.

021 303 382

Belinda Howard

Belinda completed a Level 4 certificate and a Level 5 Diploma in art and creativity at the Learning Connexion. These programmes have encouraged her to play and find her own unique artistic path. Belinda works in a wide range of media, including paint, print and clay.



26

26 Caitlin Nelson

Caitlin creates weird and wonderful pop art and inclusive jewellery. Combining skills and techniques passed through family generations to produce quirky works that delight. Over the weekend there will be opportunity to get involved and make inclusive, pride themed jewellery, crocheting small delights, and/or doing semi abstract landscapes from photo references.



Caitor.the.creator@gmail.com • @caitor.the.creator

26 Fiona Graham

Slow stitching, bookbinding, and etching combine to create Fionas eclectic medals, jewellery, guardians, and altars. Unconventional collisions of materials and techniques from a neuro divergent's insatiable, gaudy hoard. Demonstrating the creation of textile beads using quilting, embroidery, beading, wet felting, needle felting, and other fibre art techniques.




Art@fionagraham.co.nz • www.fionagraham.co.nz • @fionafibreartist

26 Maggie Duff

Maggie's art is an extension of her passion for sustainable, organic living, she works with recycled, natural and found objects. Maggie's fibre work combines hand washed and carded sheep's wool with silk and coloured wool, transforming what would be a waste product.



027 928 3771 •  maggie duff fibre Artist
@magpie duff

26 Michelle Edmondson

Michelle is a self-taught, faith-based artist. Although she paints with acrylics, her passion lies in graphite drawing. Her art is her voice, that she uses to tell a story.

Whalepainter@gmail.com • 027 524 7453
 Mystrals art



Paula Allen

Kiweitea creative Paula Allen is exhibiting poetry art from a 2024 debut poetry collection. Hope Defiant is possible thanks to support from the Earle Creativity & Development Trust. During the Art Trail Paula will be sharing a live or recorded poetry reading.

paula@penstroke.co.nz • Paulaallen.nz



26



Sandy Coombs

Award-winning Teddy Bear Artist, Sandy's latest creative pursuit is "Snowpeople." Combining her love of Christmas, angels, bling, and repurposed "treasures". Each piece boasts a distinct and unique personality.

smcteddy59@gmail.com • 021 0223 0347



26

SQUARE EDGE
COMMUNITY arts

Venue hire available book at
www.communityarts.org.nz



Drop off at
Te Whare Koha Highbury
42 Pembroke Street
Palmerston North

Te Whare Koha is a community organisation that provides free food, clothing and social services to anyone.

MORE INFORMATION

► 027-327-5192

► ARTIST'S DONATIONS
NEEDED

► POTTERY
► PAINTINGS
ART VOUCHERS

► CHARITY AUCTION

► <https://www.facebook.com/TeWhareKohaHighbury>

The Feilding and District Art Society's

2024 ART AWARDS

3rd – 31st October

A selection of the best Art Work
from Artists across New Zealand
competing here in the Manawatu

**At the Feilding Art Centre
104 Manchester st, Feilding**

Visit the Feilding Art Centre Gallery and Shop

Open Weekdays 10am - 4pm | Saturdays 10am - 1pm

104 Manchester st, Feilding 06 3232323

[f](https://www.facebook.com/Feildingart) [i](https://www.instagram.com/Feildingart) [w](https://www.whatsapp.com/channel/00291a11111111111111) www.feildingartsociety.com



Bulls

27 Ochre Arts



📍 76 High Street, Bulls

Art Supplies, Exhibition Profile, Workshop & Meeting Space. Ochre Arts supplies the tools & materials that connect you to your creativity, offering a growing range of art supplies for fine art to play & learn. Ochre Arts hosts artists and artisans and run workshops and creative experiences to share ideas and creative confidence.

hello@ochrearts.nz • 027 283 7662 • www.ochrearts.nz • [f ochre.arts](https://www.facebook.com/ochre.arts) • @ochre.arts

27 AngelCrab Wild Weaving



Angie weaves with wild materials, creating with locally, sustainably sourced natural materials. Offering workshops provides the opportunity to share the skills, knowledge, and passion for working with wild materials. Over the trail weekend, Angie will chat with visitors about the processes, from harvesting to creating, and will be making cordage demonstrations.



angelcrab40@gmail.com • 021 044 3786 • @angelcrabwildweaving
[f angelcrabwildweaving](https://www.facebook.com/angelcrabwildweaving)

27 Sculpture Play 3D



Getting dusty and satisfied, the reductive sculpting of Oamaru stone is offered in one-day workshops in Carla Woollaston's Newbury shed. During Art Trail Manawatū visitors can dabble on a partly done sculpture, experiencing how the stone feels, and the tools used. Bring a mask to keep the dust out of your nose.



carla@fluffymilk.com • 027 283 7662 • www.fluffymilk.com • @sculpture.play.3/
[f SculpturePlay3D](https://www.facebook.com/SculpturePlay3D)

27 Thistleburn Pottery



Thistleburn Pottery has a line of cast porcelain tumblers, creating these Carla enjoys the wild dance between glaze and the kiln gods. This year sees the inclusion of hand building methods. All through Art Trail the porcelain casting process will be demonstrated. Visitors can see all the stages of this process and if they wish can have a go.



carla@fluffymilk.com • 027 283 7662 • www.fluffymilk.com

Marton

Marton Arts & Crafts Centre



📍 6 Grey St, Marton

28

Marton Arts and Crafts Centre is for the community and has an ethos of connecting people through art and craft. Throughout the weekend members will be demonstrating their crafts at different times. This includes painters using a variety of mediums, potters showing wheel throwing and sculpting, weavers on the looms, quilters and embroiders making beautiful needlework and quilts. There will be beautiful art and crafts of a variety of mediums for sale.



06 327 7975 • www.macc.org.nz • [f martonartsandcrafts](https://www.facebook.com/martonartsandcrafts) • [@martonartsandcrafts](https://www.instagram.com/martonartsandcrafts)

Francien Connelly

Francien's exquisitely hand-stitched birds are both enchanting and contemporary. She uses a variety of techniques to create her intricately detailed artworks, each crafted with love and patience. During the Art Trail, Francien will be working on her next piece.



28



quirkygoose@gmail.com • 021 053 0661
@quirkygoose

John Archbold

Painting has been a fascination for most of Johns' life. He is enchanted by the ever-changing light in the landscape, which transforms the ordinary into the extraordinary. John will be painting on-site for the duration of the Art Trail.



28



archboldesign@gmail.com • 027 489 6101
[f Archbold Art](https://www.facebook.com/ArchboldArt) • www.macc.org.nz

Become a Square Edge member!

Membership is free, cancel at any time. Enter your details on our website main page, or pop in and see us at the Square Edge office.

28

Maren Domke

Maren is a ceramic and watercolour artist, she enjoys exploring the local clay and glazing materials, creating sculptures and functional pottery. Her watercolour and ceramic art both represent her love of animals and nature. Her inspiration comes from watching hares, her rabbits and years of tramping New Zealand's beautiful landscapes. During the Arts Trail Marton will be in the pottery studio working on another of her ceramic sculptures.



28

Sam Lewry

Originally from the Kāpiti Coast, Sam is now based in the Rangitikei. Sam's art practice began in 2009, her work primarily focuses on stylised and imagined landscapes painted in oil, the work has evolved into a meditative process, an escape, and a deeper connection with the natural world.

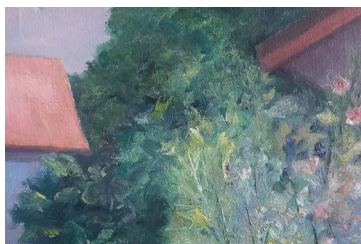


sam@lewry.co.nz • 021 022 66771 • www.lewry.co.nz • [f SamLewryNZArtist](https://www.facebook.com/SamLewryNZArtist)

28

Vivian Yuan

Vivian Yuan is an artist working in oil and watercolour. Vivian's favourite subject is people, followed by flowers and landscapes expressing mood and emotion. She hopes that her work might also evoke the viewer's own experience and memories. Currently her work focuses on applying expressive colours and visible brushstrokes to represent a moody scene.



Vivianyuan88@hotmail.com • 027 535 5885 • @vivianyuan_art

Exhibit with us 2025

We would love to hear from artists working in diverse media and kaupapa including cultural, street art, digital, textile, social justice and more!

To submit an online proposal visit: www.communityarts.org.nz/exhibit-with-us

Proposals for 2025 close on November 30 2024



Mangaweka

Richard Aslett

Mangaweka “Yellow Church” Gallery

Richard is a multi-media visual/musical Artist and resident at “Yellow Church” Gallery in Mangaweka. Trained in advertising display/ design Richard creates colourful pop-art, screen-prints and photography. He is the organiser of the infamous Fakes & Forgeries exhibitions.

Sunday 13 October 11am to 3pm – Introduction to Screen-Printing Workshop

Participants will be given a history in the development of the art-form, and then create three different colourful images, using the process. Participants will be required to choose one artwork to remain for exhibiting at the ‘Yellow Church’ Gallery in Nov/Dec 2024. \$50 for each participant, all materials included. Contact Richard to book your spot.

📍 6360 State Highway One, Mangaweka

mangawekagallery@xtra.co.nz • 027 52 66 612 • www.mangawekagallery.com

📱 franky.forgery



29

Richard Fuller

Richard began painting 38 years ago as an occupational therapy, his art forming a language to communicate from the sub-conscious to present and is often only understood with the passage of time.

📍 27 Broadway, Mangaweka

richardfuller4@xtra.co.nz

nz.linkedin.com/pub/richard-fuller



30

Look for this Art Trail Manawatū banner outside each location.



Art lovers, creatives, and inspiration seekers - this one's for you.

Whether you're a creative connoisseur, a collector of treasures or simply looking to fill your inspirational cup, this self-drive art trail of galleries, museums and open studios is a must-see.

Follow the pulse of creativity running through Manawatū, Whanganui and Taranaki.

coastalartstrail.nz



coastal
arts trail



VISIT THE
FEILDING ART CENTRE

104 MANCHESTER ST, FEILDING

**AFFORDABLE ART
CLASSES**

ART WORKSHOPS

**HAVE-A-GO
GROUPS**

**MAKE
ART**

**EVERY MONTH A
NEW EXHIBITION**

**HAND MADE
TREASURES AND
UNIQUE GIFTS**

**SEE
ART**

**OPEN
10AM – 4PM
WEEKDAYS
10AM – 1PM
SATURDAYS**

**BUY
ART**

**OPPORTUNITIES
TO EXHIBIT
& ENTER
COMPETITIONS**

**BECOME
A
MEMBER**

**REGULAR
NEWSLETTERS
DISCOUNTS
EARLY-BIRD
OPPORTUNITIES**

WWW.FEILDINGARTSOCIETY.COM

 **Feilding**
– and District –
Art Society



&



@FEILDINGART

Tickets available @ Globe
Box Office or online,
unless stated otherwise

TUES 1

Pantaloons - Winnie The Pooh

THURS 3, 8PM

Palmy Drag Fest -

Spankie Jackzon

FRI 4, 8PM

**Palmy Drag Fest - Drag Story
Time, Sassy Adults Edition**

Tickets \$22

FRI 4

Duo Enharmonics

SAT 5

**Hogsnort Bulldogs Goodtime
Show**

SUN 6, 8PM

Elton vs Billy NZ Tour 2024

Tickets \$52.50/\$46.86/\$49.42

FRI 11, 8PM

**Boom Boom Room Burlesque -
Let Them Eat Cake**

Tickets \$40

FRI 11

The JAC

Show times and tickets prices
are announced 6-8 weeks before
the show.

SAT 12

**Corps De Burlesque -
Student Showcase**

SUN 13

Viva - Massey University Choir

FRI 18, 7.30PM

**Alliance Francaise
French Film Night**

SAT 19

Swamp City Big Band

SAT 19

**The Comedy Hub Presents:
Ben Hurley**

Tickets \$30/\$20

SUN 20, 2.30PM

**Sunday Matinee Series -
Papaioea Trio**

Entry by donation. Suggested \$5

Tues 22, 5.30PM

Women & Business

womenandbusiness.co.nz

Please check the Globe
Theatre website for information and
sign up to our Weekly Newsletter.



@GlobeTheatrePN



@globetheatrePN

www.globetheatre.co.nz

SHOWCASING OUR COMMUNITY

Tickets available @ Globe
Box Office or online,
unless stated otherwise

NOV & DEC 2024

FRI NOVEMBER 1

Turkey The Bird

SATURDAY NOVEMBER 2

Miss Pole Dance Competition

THURS/FRI NOVEMBER 7/8

Hot Spot - Improv Comedy

SAT NOVEMBER 9

**The WhiskHe & Sin
Cabaret Show**

THURS/FRI NOVEMBER 14/15

Hot Spot - Improv Comedy

SAT NOVEMBER 16

Purerehua Live Storytelling

THURS - SAT NOVEMBER 21 - 30

**Manawatu Theatre Society -
Don't Get Your Vicars In A Twist**

THURS NOVEMBER 28

Broadway Bound

Show times and tickets prices
are announced 6-8 weeks before
the show.

FRI NOVEMBER 29

**Alliance Francaise - French
Film Night**

SAT NOVEMBER 30

**Comedy Hub - Crack Up
w/ The Cuzzies 6**

FRI DECEMBER 6

**Altitude Pole - Student
Showcase**

SUN DECEMBER 8

**Sunday Matinee Series - Olga
Shanina & Guy Donaldson**

SUN DECEMBER 8

**Legato Vocals - Student
Showcase**

FRI DECEMBER 13

Aziza Bellydance

FRI/SAT DECEMBER 13/14

**Boom Boom Room Burlesque-
Jingle All The Way**

Please check the Globe
Theatre website for information and
sign up to our Weekly Newsletter.



@GlobeTheatrePN



@globetheatrepn

www.globetheatre.co.nz

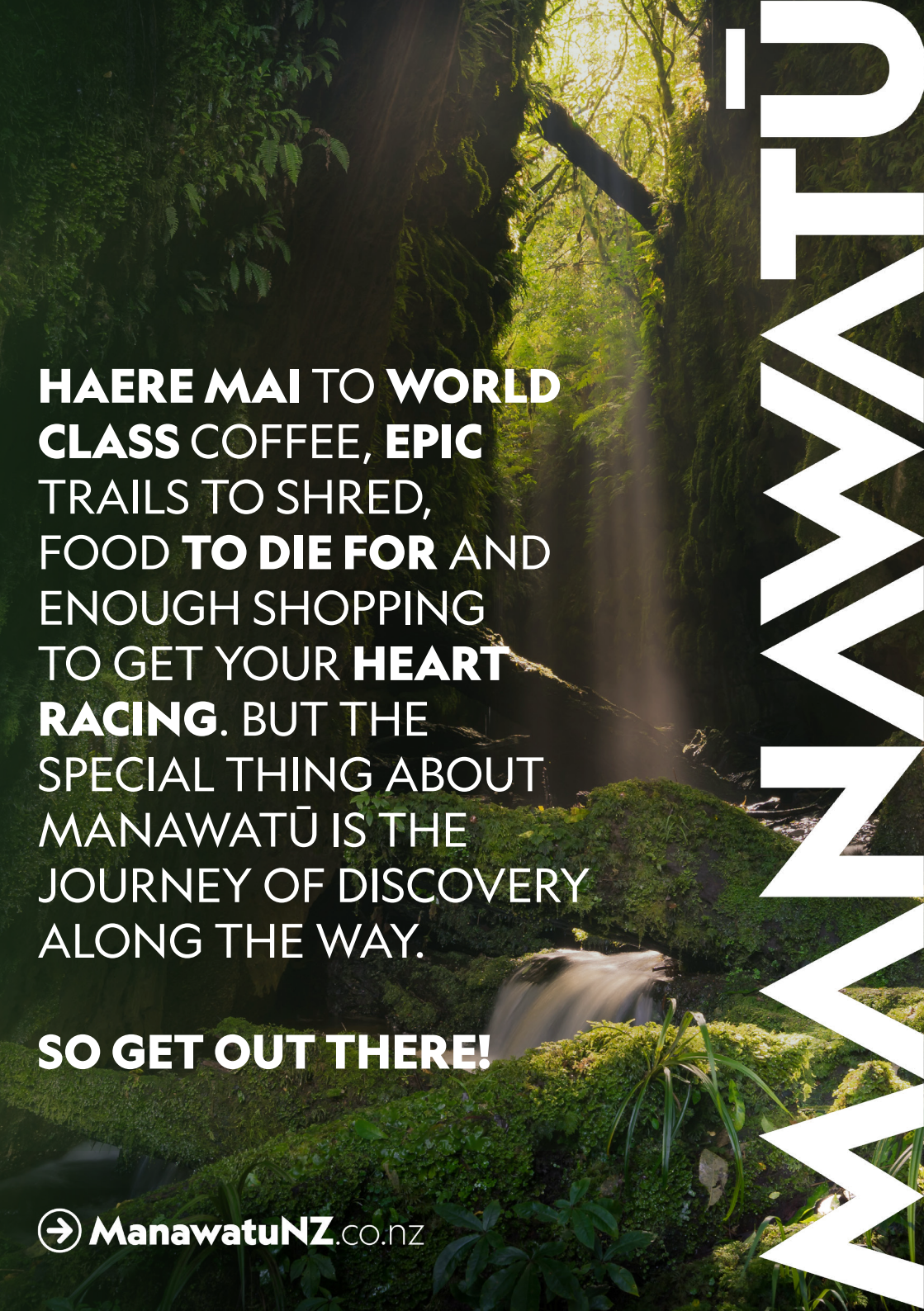
SHOWCASING OUR COMMUNITY



MANAWATŪ GARDENS FESTIVAL // NOVEMBER 2024

Find out more:

➔ **ManawatuNZ**.co.nz/gardens-festival/



**HAERE MAI TO WORLD
CLASS COFFEE, EPIC
TRAILS TO SHRED,
FOOD TO DIE FOR AND
ENOUGH SHOPPING
TO GET YOUR HEART
RACING. BUT THE
SPECIAL THING ABOUT
MANAWATŪ IS THE
JOURNEY OF DISCOVERY
ALONG THE WAY.**

SO GET OUT THERE!

art TRAIL MANAWATŪ

Oct 12 – 13 • 10 – 4pm

Palmerston North

Ashhurst

Pohangina

Foxton

Himatangi

Feilding

Bulls

Marton

Mangaweka



Art Trail is a funded event that relies on your feedback to continue, scan the QR code, share your experience and be in to **win one of three \$300 vouchers** from LIGHTBOX Gallery + Art Supplies

PRESENTED BY



MADE POSSIBLE WITH THE HELP OF OUR KEY SPONSORS

